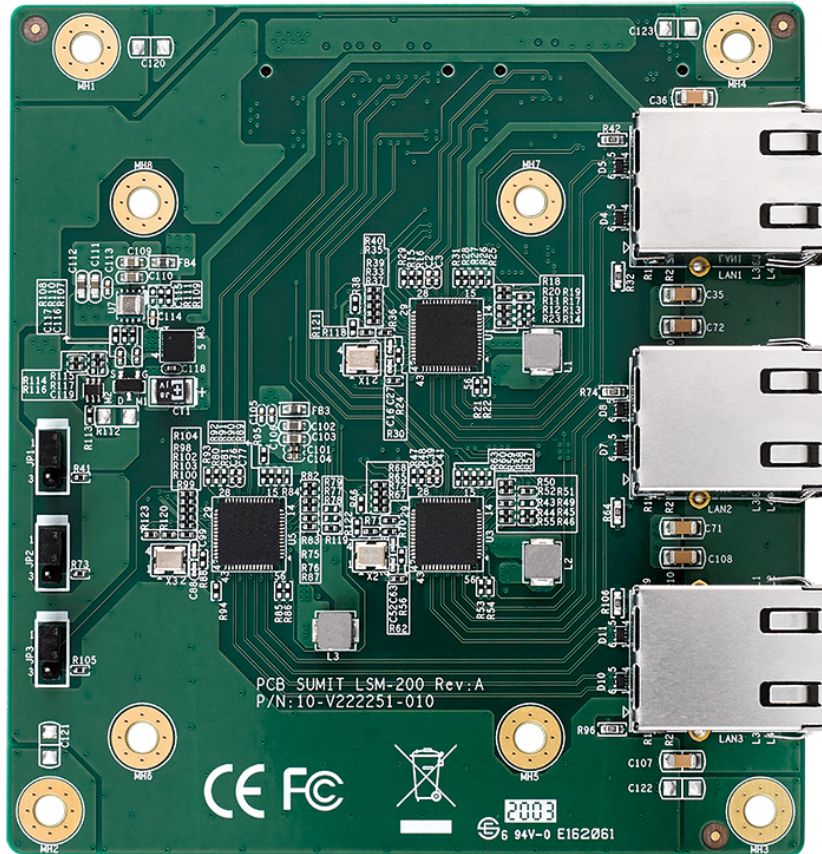
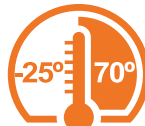
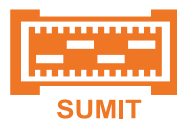


LSM-200 SUMIT EXPANSION CARD

3-port 2.5G LAN, IEEE 1588 PTP, 2.5Gbps/1Gbps/100Mbps/10Mbps, -25°C to 70°C



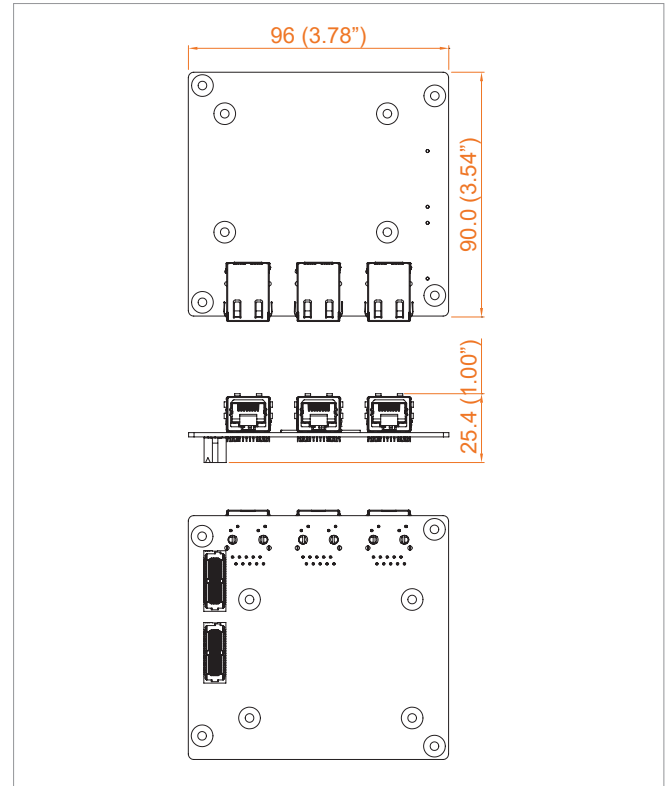
- Intel® Ethernet Controller I225 supports up to 2.5Gbps data transfer
- 3 independent LAN ports support 2.5Gbps/1Gbps/100Mbps/10Mbps data rate
- -25°C to 70°C Operating Temperature
- IEEE 1588 Precision Time Protocol (PTP) Up to 9.7kB Jumbo Frame, Link Aggregation
- Supports On-chip QoS and Traffic Management
- SUMIT A, B Interface



Specifications

Ethernet	
LAN Controller	Intel® Ethernet Controller I225
Data Rate	2.5Gbps/1Gbps/100Mbps/10Mbps
Jumbo Frame	Up to 9.7kB supported
Link Aggregation (LAG)	Present
VLAN	802.1Q VLAN supported
I/O Interface	
Bus Type	SUMIT A, B
LAN	3 RJ45 Connector
Mechanical	
Dimensions	90.0mm x 96.0mm (3.54 " x 3.78 ")
Weight	145 g
Environment	
Operating Temperature	-25°C to 70°C (-13°F to 158°F)
Storage Temperature	-40°C to 85°C (-40°F to 185°F)
Humidity	5% to 95% Humidity, non-condensing
Relative Humidity	95% at 70°C
EMC	CE, FCC Class A

Dimensions



Order Information

LSM-200

SUMIT Card with 3 Channel 25G LAN



LSM-200

* All product information may subject to change without prior notice.

* The rights of all brand names, product names and trademarks belong to their respective owners.