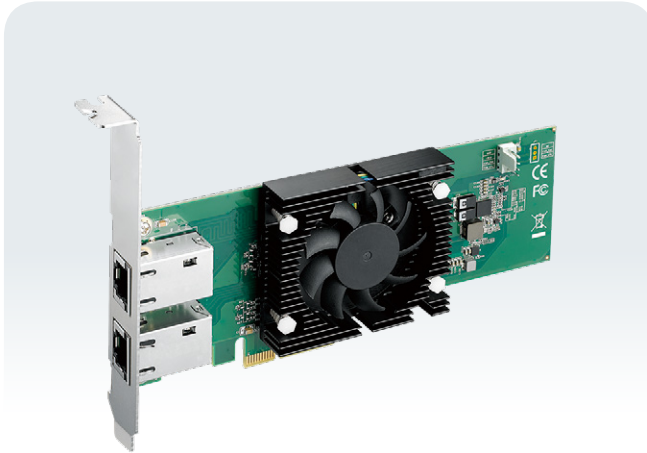


LE-1055 EXPANSION CARD

Low Profile 2-port 10 GigE LAN Expansion Card, PCI Express x4, -40°C to 55°C



Features

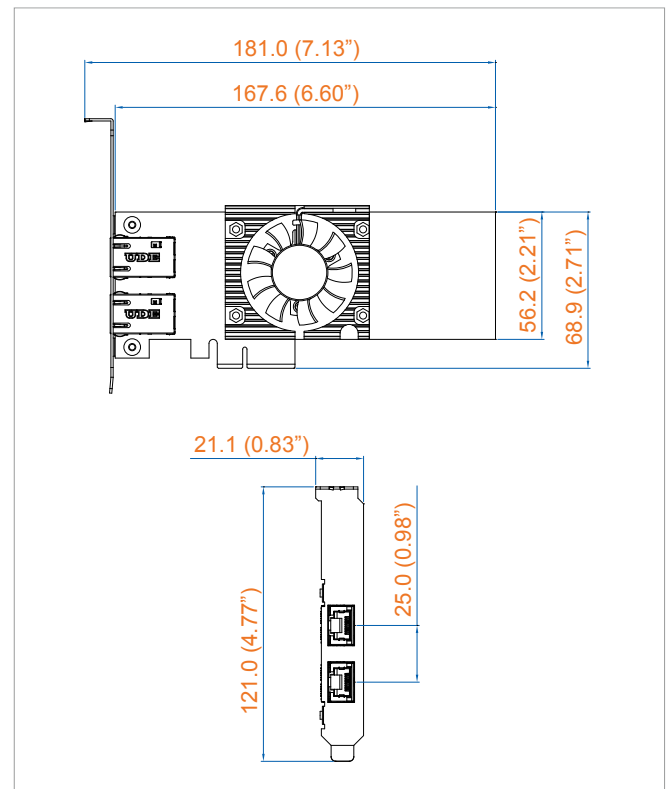
- Intel® X550-AT2 10GBASE-T controller supports up to 10Gbps data rate
- IEEE 802.3an Fast Ethernet standard compliant
- IEEE 1588 Precision Time Protocol (PTP)
- IEEE 802.1Q VLAN Tagging
- Up to 9728 bytes Jumbo Frame, Link Aggregation
- Supports Wake-on-LAN (WoL) & PXE
- Intel® Ethernet Power Management
- Intel® Data Direct I/O Technology
- Intel® Virtualization Technology for Connectivity (VT-c)
- Low Profile and Full Height form factors available
- -40°C to 55°C Operating Temperature



Specifications

| Ethernet | |
|------------------------|---|
| Interface | PCI Express x4 |
| Controller | Intel® Ethernet Controller X550-AT2 |
| Controller Qty | 2 |
| Data Rate | 10Gbps/5Gbps/2.5Gbps/1Gbps/100Mbps |
| Number of Port | 2 |
| Jumbo Frame | Up to 9728 bytes |
| Link Aggregation (LAG) | Present |
| Connector | 8-pin RJ45 |
| Mechanical | |
| Dimensions (W x L) | 168mm x 121mm (6.6" x 4.8", PCIe low profile) |
| Bracket | Full height/Low profile |
| Environment | |
| Operating Temperature | -40°C to 55°C (-40°F to 131°F, with Fan) |
| Storage Temperature | -40°C to 85°C (-40°F to 185°F) |
| Humidity | 5% to 95% Humidity, non-condensing |
| Relative Humidity | 95% @ 55°C |
| EMC | CE, FCC |

Dimensions (mm/inch)



Order Information

| | |
|---------|--|
| LE-1055 | 2-port 10 GigE LAN Card with Intel® X550-AT2 Controllers |
|---------|--|

* The rights of all brand names, product names and trademarks belong to their respective owners.